

Writing Coaches
of montana
"Community Mentors Coaching Young Writers"

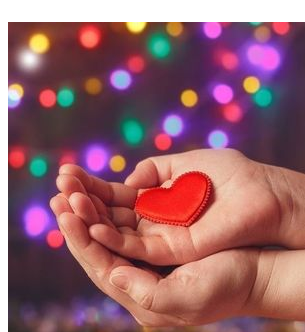
Coaching update

We are wrapping up a wonderful fall 2021. **By the school holiday break, we will have coached 1,225 sessions this semester!** We couldn't have achieved this community work without the dozens of outstanding coaches who have stayed active online and in-person to accommodate school preference during continued pandemic classroom management. From language arts/science cross-curricular creative stories to personal essays on "Taking a Stand" to crafting bills, this semester has been filled with wonderful moments of learning and connection.

In the new year we will continue programming in Missoula and Flathead and we will return to Ravalli, coaching in Neil Massey's Hamilton High School classes and Corvallis High School's AP and dual enrollment classes. Here's to an outstanding spring 2022 to come!

In the meantime, the entire WCM team wishes you and your loved ones a happy holiday season filled with health, joy, and peace.

In the picture below, 8th graders from Target Range School District are reading their creation stories to 5th graders. In a language arts/science cross-curricular project, 8th graders wrote creation stories with scientific space elements. Coaches thoroughly enjoyed helping the students develop their creative and scientific voices!



WCM's Giving Season

Thank you to everyone who has given financially and signed up to become a writing coach during our Giving Season!

We are 50% to our \$3,500 goal and 75% to our goal of recruiting 20 news coaches. Can you help us cross the finish line this December?

Giving comes in all shapes and forms. When we asked our community, "Why do you give to WCM?" we received these inspiring responses:

- Lynda Fisher, Bitterroot coach and nurse at Florence-Carlton Schools: "I think that helping kids learn how to gather information, form and act on their opinion, and support that opinion based on their own research is a valuable life skill that will serve them well in whatever career path they choose."
- Jane Peranteau, Flathead coach: "To sit with students and watch them assert their own ideas into words is to see their understanding of themselves and their place in the world expand before your eyes. They've taken a risk to do so, claiming a stand, whether they're writing about global warming or social dissent or immigration or foster care. For me, as a writer, it can be inspirational to witness. I'm reminded that writing takes courage, and I'm heartened to support theirs."
- Shasta Hecht, WCM intern: "Seeing the light that shines in a student's eyes when they gain confidence in their writing is incredibly rewarding. I feel so lucky to be able to help these students foster a healthy relationship with the writing process, and to help them gain necessary skills that prepare them for the rigors of college and beyond."
- Jim Hogan, board member based in Missoula: "I support WCM with both my time and my financial contributions because I firmly believe in the value of our mission. Because we seek to minimize expenses to our partner schools, donations from the communities which we serve are vital to our organization. I hope you will consider supporting WCM's important work in the coming year."

Here are ways in which you can give back:

1. **Donate financially to WCM:** [Ask for a WCM donation](#) as one of your gifts this year or [gift a monthly donation through Friends of WCM](#) to a loved one. Your financial donations supplement school costs for services, so every penny builds our coaching to serve students!
2. **Indulge in Sweet Charity:** Our Vice President's commitment to WCM and other nonprofits is inspiring. Each year she donates her time to bake homemade sweets which support local nonprofits. WCM will benefit from donations for [her delicious peanut butter balls](#). Orders are a maximum of two boxes per household (a dozen balls per box) and are due to cassie@writingcoachesofmontana.org by December 15. Donors choose the amount to donate. We're only able to deliver near Missoula. (Hopefully next year we will have the capacity to ship!)
3. **Recruit a friend to become a coach:** We are always looking for more coaches so that we can continue to serve schools in Western Montana and beyond. Recruiting a friend to become a coach is extra special because it's the gift that keeps on giving all year! Our next volunteer training is this [Thursday, December 9, 6-8:45pm, online](#).

New Coach Training--Give to WCM this season by recruiting a friend!

As demand for our services grows, so does our need for trained coaches. A great way to support WCM's mission is by helping us to recruit new coaches.

We will have an **online new volunteer training on Thursday, December 9, from 6-8:45pm**. Please consider emailing friends and colleagues who would make great coaches. Requirements are simple: an open mind, supportive attitude, and willingness to meet students where they're at. Our literacy experts will help people build their coaching confidence during our training workshop and during monthly volunteer meet-ups focused on professional development.

Register for the workshop [HERE](#).

Thank you to Target Range School District for sponsoring this training! And, thank you to all of our wonderful volunteer coaches who make what we do possible. You are the backbone of WCM.



Corporate Sponsorship--a great way to highlight local business and support WCM's mission!

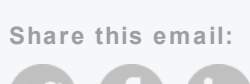
Since the beginning of fall 2021, WCM has been growing a corporate sponsorship program. In exchange for financial donations, local businesses across Flathead, Missoula, and Ravalli counties receive marketing coverage through our newsletter, Facebook page, and (brand new!) Instagram page. Best of all, platinum level sponsors are interviewed by WCM's writer volunteer, Kat Jackson, about how their business values literacy and community in the workplace. These insightful interviews are shared on our website and social media pages--a win/win for WCM and business publicity!

If you're interested in corporate sponsorship, please get in touch with Executive Director, Cassie Sheets, at cassie@writingcoachesofmontana.org.

With gratitude,
The WCM Team

www.writingcoachesofmontana.org

Share this email:



[Manage](#) your preferences | [Opt out](#) using TrueRemove®

Got this as a forward? [Sign up](#) to receive our future emails.

View this email [online](#).

PO Box 7592
Missoula, MT | 59807 US

This email was sent to .

To continue receiving our emails, add us to your address book.

[Subscribe](#) to our email list.